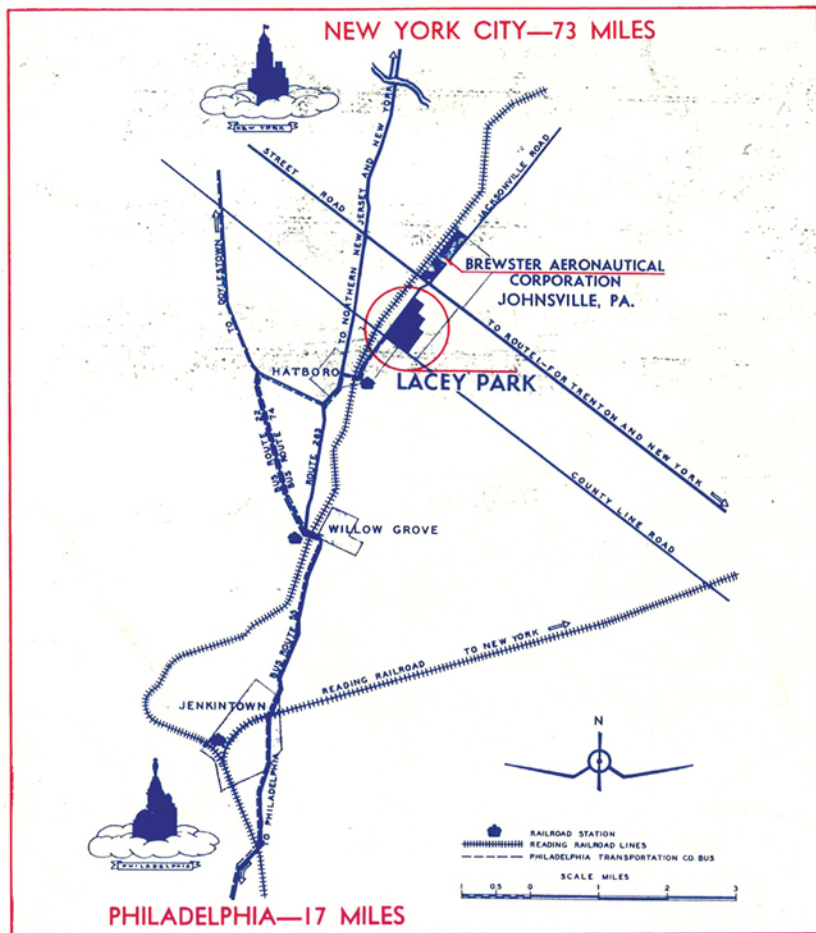


## Close to Metropolitan Centers



LACEY PARK is but thirty-five minutes by Reading Railroad from the heart of Philadelphia, with frequent service to this great metropolitan shopping, amusement and cultural center.

LACEY PARK has ample bus service; about three minutes to the Brewster Johnsville Plant; five minutes to Hatboro; twelve minutes to Willow Grove; and twenty minutes to Jenkintown.

Applications Accepted at:  
BREWSTER PLANTS and  
LACEY PARK, PENNSYLVANIA

New York Exhibition Office  
opposite Brewster Plant  
LONG ISLAND CITY, NEW YORK

A Home Development for War Workers Sponsored by  
NATIONAL HOUSING AGENCY • FEDERAL PUBLIC HOUSING AUTHORITY

## Happy Homes for Brewster Families



### LACEY PARK

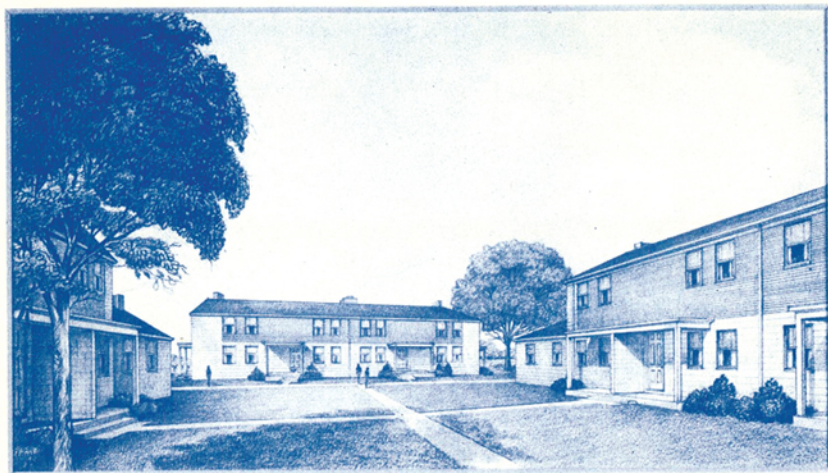
The homes in this community, adjoining Johnsville and Hatboro, nestle upon a hundred and seventy-five acres of rolling countryside in beautiful Warminster Township, Bucks County, Pennsylvania. Designed for the families of more than twelve hundred war workers, this development includes shopping, school and all recreational facilities.

This suburban town affords a homey environment abounding in natural advantages, free from air pollution and daily hazards that surround city life. The density of families in LACEY PARK is but seven per acre. Each house possesses an ample front lawn and rear yard, with private entrances completing their individuality as American Homes.

Fertile grounds for Victory  
Gardens provided for every family  
amidst the open lawns and  
play areas of LACEY PARK.

A Home Development for War Workers Sponsored by  
NATIONAL HOUSING AGENCY  
FEDERAL PUBLIC HOUSING AUTHORITY

## Happy Homes for War Winners



To America's War Workers LACEY PARK represents an outstanding portion of the program of the NATIONAL HOUSING AGENCY, operating through its constituent, the FEDERAL PUBLIC HOUSING AUTHORITY.

Dwellings in this comfortable, residential community are reserved exclusively for workers in a war effort vital to the continuance of the American way of life.

#### FOR THE TOTS.

LACEY PARK has a specially designed Child Care Center. War-working parents are assured that here their little ones will enjoy the very best of care in their absence.

#### CONVENIENT SCHOOLS.

An attractive new grade school in LACEY PARK combines comfort, convenience, and safety for its boys and girls. Adequate transportation is provided to either of two excellent high schools adjoining the Park.

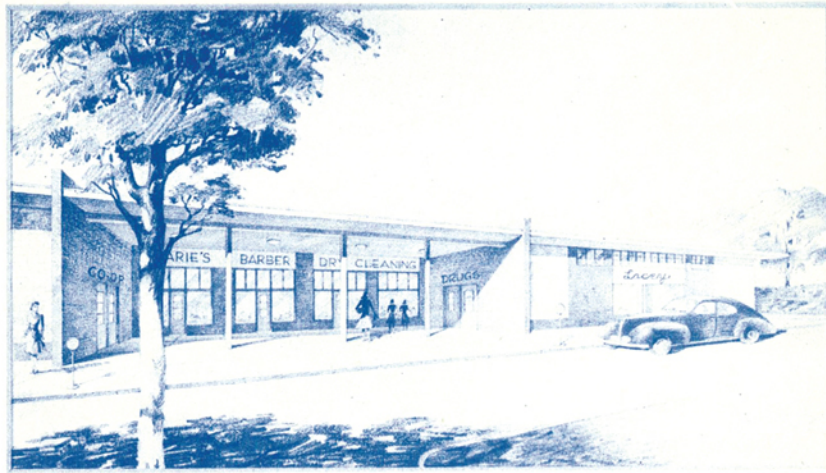
#### FOR THE YOUNGER SET.

Numerous play areas for children and youths are scattered throughout LACEY PARK. Recreational activities are directed by staff members well versed in their needs.

#### NEARBY CHURCHES.

In adjoining communities there are many churches, among them: in Warminster Township, Catholic and Presbyterian; in Johnsville, Protestant; and in Hatboro, Baptist, Methodist, Protestant Episcopal.

## Lacey Park's Shopping Center



LACEY PARK, in its own shopping center, has a Food Market, Drug Store, Barber Shop, Beauty Parlor, and pick-up service for Shoe Repairing, Cleaning, Laundering, etc.; also a Post Office Branch Station.

Neighboring Hatboro provides a wider retail shopping area, a bank, and restaurants. Nearby Jenkintown has a business center noted for its ready-to-wear shops.

#### HEALTH CARE FACILITIES.

A Health Clinic is provided in LACEY PARK for the welfare of all its families. This friendly center will provide expert attention for children, youths and adults.

Advice concerning food problems, essential in these days of war rationed diets, is available to residents of LACEY PARK.

Convenient to LACEY PARK is the Abington Memorial Hospital, termed "One of America's Great Community Hospitals."

#### RECREATION FOR ALL.

LACEY PARK prizes a handsome Community Building, with game and club rooms, library, auditorium, lounge and other enjoyable features for every age.

Provided in the Park are many types of outdoor recreational facilities, among them several ball fields and tennis courts.

Adjoining LACEY PARK, the town of Hatboro has a modern air-conditioned movie theatre, and an attractive library.